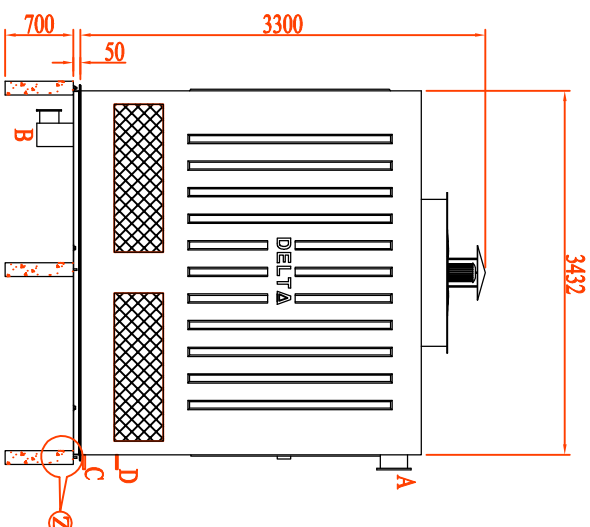
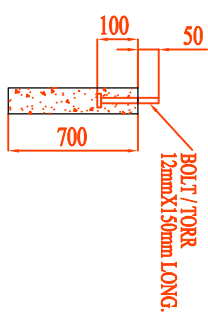
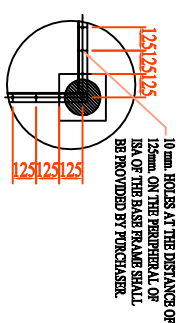


Front View

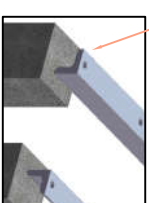


Side View

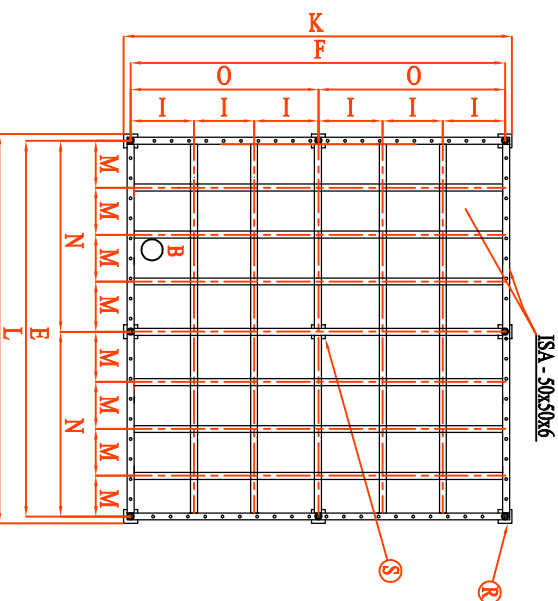


ELEVATION OF PILLER WITHOUT BOLT OF MKD - "R" (QTY - 8 NOS.)

ALL PERIPHERAL ISA (ANGLES) SHALL BE FACED OUTSIDE.



ELEVATION OF PILLER WITHOUT BOLT OF MKD - "S" (QTY - 1 NO.)



Base Frame

Notes:-

1. All dimensions are in millimeters.
2. Cooling tower will be assembled on iso-50x50x6 frame fixed on RCC pillar the frame is under purchasers scope unless otherwise stld.
3. Makeup and quickfill connection shall be provided with thread connections as per is-544-1955.
4. Inlet & outlet connection shall be provided without flange.
5. RCC basin and RCC pillars 250x250x700 ht. And $\phi 12 \times 150$ long bolts/tor are under purchaser scope.
6. 10 mm hole at the distance of 125mm on the peripheral of ISA of the base frame shall be provided by purchaser.
7. Location of outlet connection will be as per the site requirement.
8. $\phi 12 \times 150$ long bolts/tor shall be grouted in the centre of outer columns as shown in the drawing.
9. All pictures shown are for illustration purpose only and may differ from the actual cooling tower model.

E	F	K	L	M	I	N	O	P
4344	3432	3682	4594	543	572	2172	1716	1500

DESCRIPTION	MARK	SIZES
INLET PIPE CONNECTION	A	150X2 NOS.
OUTLET PIPE CONNECTION	B	200 X 1 NO.
DRAIN & OVERFLOW CONNECTION	C	50 EACH
MAKEUP AND QUICKFILL CONNECTION	D	25 EACH
LENGTH OF COOLING TOWER	E	4344
WIDTH OF COOLING TOWER	F	3432
FAN DIA AND NOS.	P	$\phi 1500 \times 2$ Nos.
OPERATING WEIGHT (KG.)		4600

NOT TO SCALE / DO NOT SCALE DRAWING	X28 NO.
TITLE:	G.A OF DRG. OF COOLING TOWER MODEL NO. 6300
COMPANY:	SERIES - DPC 60
	Delta Cooling Towers P. Ltd
	Delhi
	(PH - 011-2749380/0203) EMAIL - mail@delta.cool
SITE:	
Design@delta.cool	REV - 12/2017