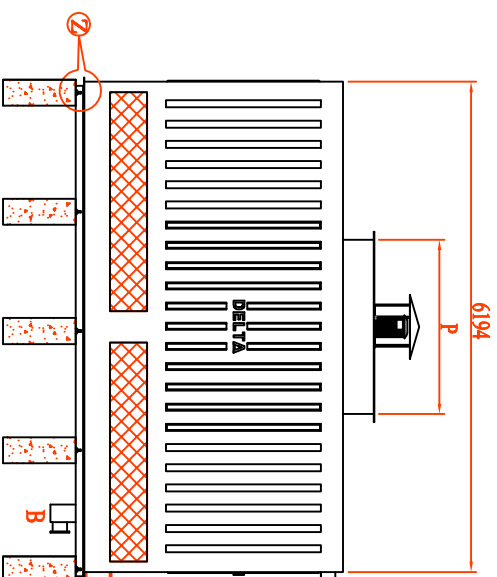
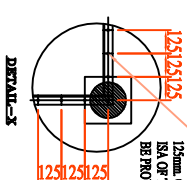
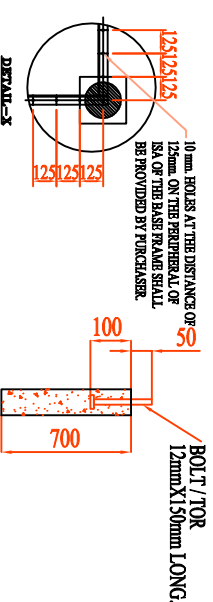


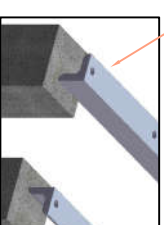
Front View



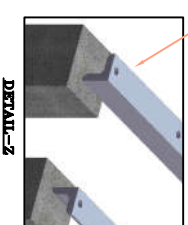
### Side View



**ELEVATION OF PILLER  
WITHOUT BOLT OF MKD - "R"  
(QTY - 16 NOS.)**



ALL PERIPHERAL ISA (ANGLES) SHALL BE FACED OUTSIDE.



ELEVATION OF PILLER  
WITHOUT BOLT OF MKD - "S"  
(QTY-9 NO.)

1. All dimensions are in millimeters.
2. Cooling tower will be assembled on ISA-50x50x6 frame fixed on RCC pillar the frame is under purchasers scope unless otherwise stated.
3. Makeup and quickfill connection shall be provided with thread connections as per is-544-1955.
4. Inlet & outlet connection shall be provided without flange.
5. RCC basin and RCC pillars 250x250x700 ht. And  $\phi 12 \times 150$  long bolts/tor are under purchaser scope.
6. 10 mm hole at the distance of 125mm on the peripheral of ISA of the base frame shall be provided by purchaser.
7. Location of outlet connection will be as per the site requirement.
8.  $\phi 12 \times 150$  long bolts/tor shall be grouted in the centre of outer columns as shown in the drawing.
9. All pictures shown are for illustration purpose only and may differ from the actual cooling tower model.

E	F	K	L	M	I	N	O	P
7960	6194	6444	8210	664	516	1990	1548	2700

DESCRIPTION	MARK	SIZES
INLET PIPE CONNECTION	A	200 X 4 NOS.
OUTLET PIPE CONNECTION	B	200 X 4 NOS.
DRAIN & OVERFLOW CONNECTION	C	65 EACH
MAKEUP AND COOLWELL CONNECTION	D	40 EACH
LENGTH OF COOLING TOWER	E	7960
WIDTH OF COOLING TOWER	F	6194
FAN DIA AND NOS.	P	Ø2700 X 2 Nos.
OPERATING WEIGHT (KG.)		15600

NOT TO SCALE / DO NOT SCALE DRAWING	JOB NO. -
<b>TITLE</b>	
G.A. OF DRG. OF COOLING TOWER MODEL NO. 61KO SERIES - DPC 60	
<b>COMPANY:</b>	
Delta Cooling Towers P. Ltd Delhi	
(PH. - 011-2749380/02/03) EMAIL - <a href="mailto:mail@delta.cool">mail@delta.cool</a>	
<b>SITE:</b>	
DesignOfCooling.com	
REV. - 12/2017	