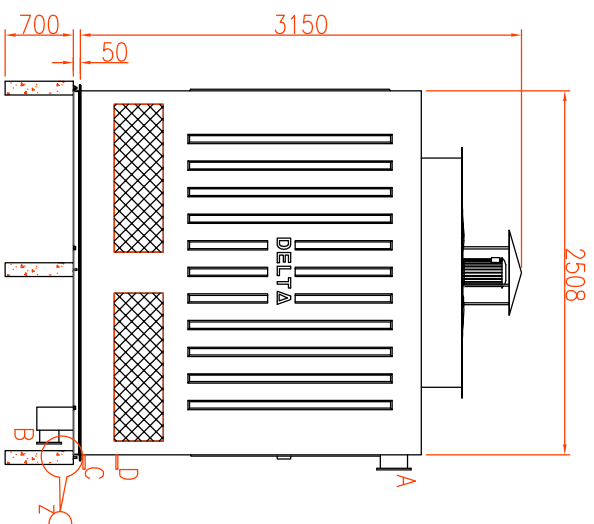
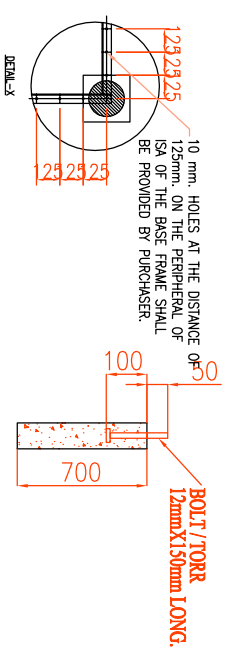


Front View



Side View

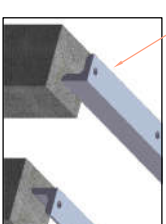


ELEVATION OF PILLER WITHOUT BOLT OF MKD - "R" (QTY - 8 NOS.)



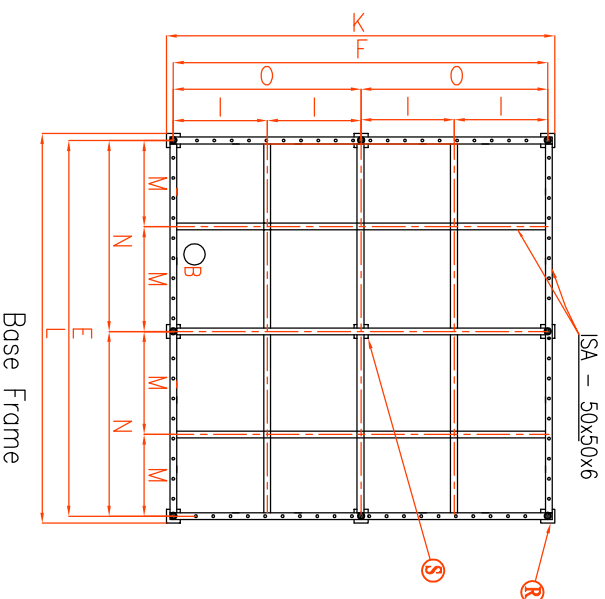
ELEVATION OF PILLER WITHOUT BOLT OF MKD - "S" (QTY - 1 NO.)

ALL PERIPHERAL ISA (ANGLES) SHALL BE FACED OUTSIDE.



Notes:-

1. All dimensions are in millimeters.
2. Cooling tower will be assembled on ISA-50x50x6 frame fixed on RCC pillar the frame is under purchasers scope unless otherwise stated.
3. Makeup and quickfill connection shall be provided with thread connections as per is-544-1955.
4. Inlet & outlet connection shall be provided without flange.
5. RCC basin and RCC pillars 250x250x700 ht. And $\phi 12 \times 150$ long bolts/tor are under purchaser scope.
6. 10 mm hole at the distance of 125mm on the peripheral of ISA of the base frame shall be provided by purchaser.
7. Location of outlet connection will be as per the site requirement.
8. $\phi 12 \times 150$ long bolts/tor shall be grouted in the centre of outer columns as shown in the drawing.
9. All pictures shown are for illustration purpose only and may differ from the actual cooling tower model.



DESCRIPTION	MARK	SIZES
INLET PIPE CONNECTION	A	100X 2 NOS.
OUTLET PIPE CONNECTION	B	125X 1 NOS.
DRAIN & OVERFLOW CONNECTION	C	50 EACH
MAKEUP AND QUICKFILL CONNECTION	D	20 EACH
LENGTH OF COOLING TOWER	E	2508
WIDTH OF COOLING TOWER	F	2508
FAN DIA AND NOS.	P	$\phi 1500 \times 1$ NOS.
OPERATING WEIGHT (KG.)		1900

TITLE:	JOB NO.:-
NOT TO SCALE / DO NOT SCALE DRAWING	
G.A OF DRG. OF COOLING TOWER MODEL NO. 6125	
SERIES - DFC 60	
COMPANY:	
Delta Cooling Towers P. Ltd	
Delhi	
(PH - 011-27495801/02/03) EMAIL - info@delta.co.in	
SITE:	
DesignOnContract.com	REV :- 12/2017