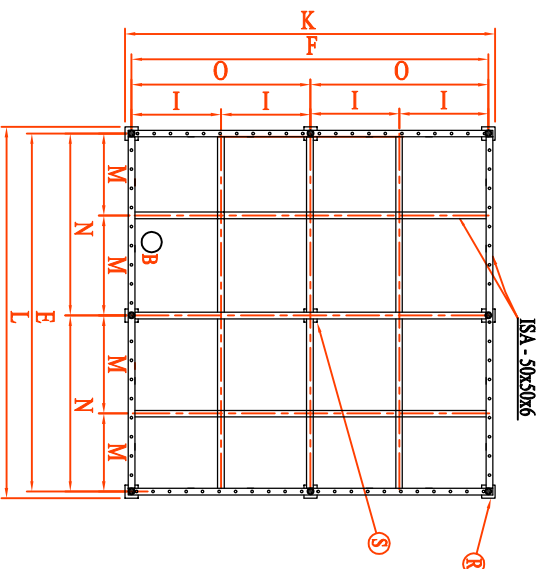
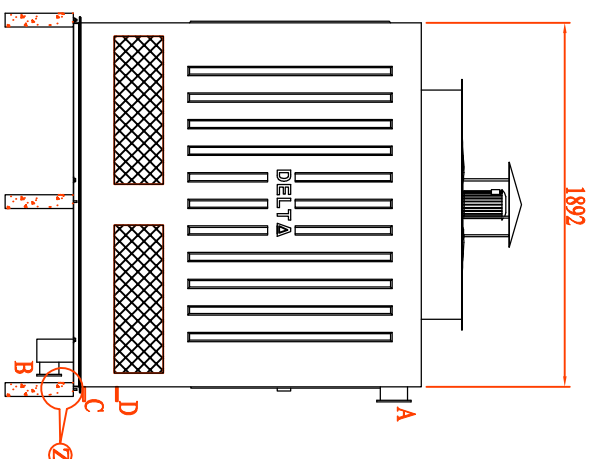


Front View



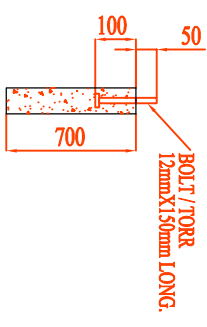
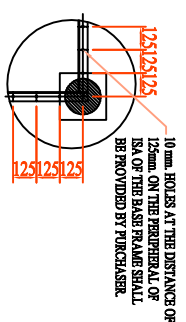
Base Frame



Side View

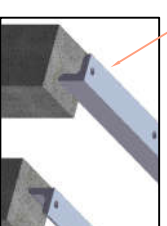
Notes:-

1. All dimensions are in millimeters.
2. Cooling tower will be assembled on ISA-50x50x6 frame fixed on RCC pillar the frame is under purchasers scope unless otherwise stated.
3. Makeup and quickfill connection shall be provided with threaded connections as per is-544-1955.
4. Inlet & outlet connection shall be provided without flange.
5. RCC basin and RCC pillars 250x250x700 ht. And $\phi 12 \times 150$ long bolts/tor are under purchaser scope.
6. 10 mm hole at the distance of 125mm on the peripheral of ISA of the base frame shall be provided by purchaser.
7. Location of outlet connection will be as per the site requirement.
8. $\phi 12 \times 150$ long bolts/tor shall be grouted in the centre of outer columns as shown in the drawing.
9. All pictures shown are for illustration purpose only and may differ from the actual cooling tower model.



ELEVATION OF PILLER WITHOUT BOLT OF MKD - "R" (QTY - 8 NOS.)

ALL PERIPHERAL ISA (ANGLES) SHALL BE FACED OUTSIDE.



ELEVATION OF PILLER WITHOUT BOLT OF MKD - "S" (QTY - 1 NO.)

DESCRIPTION	MARK	SIZES
INLET PIPE CONNECTION	A	100X2 NOS.
OUTLET PIPE CONNECTION	B	125X1 NOS.
DRAIN & OVERFLOW CONNECTION	C	50 EACH
MAKEUP AND QUICKFILL CONNECTION	D	20 EACH
LENGTH OF COOLING TOWER	E	2200
WIDTH OF COOLING TOWER	F	1892
FAN DIA AND NOS.	P	$\phi 1200 \times 1$ Nos.
OPERATING WEIGHT (KG.)		1200

NOT TO SCALE / DO NOT SCALE DRAWING	XDS NO.:-
TITLE: G.A OF DRG. OF COOLING TOWER MODEL NO. 6480	
SERIES - DPC 60	
COMPANY: Delta Cooling Towers P. Ltd	
Delta	
(PH - 011-2749380/0203) EMAIL - info@delta.coil	
SITE:	
DesignOnContract.com	REV :- 12/2017